

CybraryRSVP™ Software

Libraries

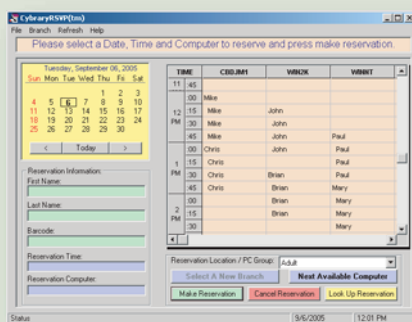
Schools

Corporations

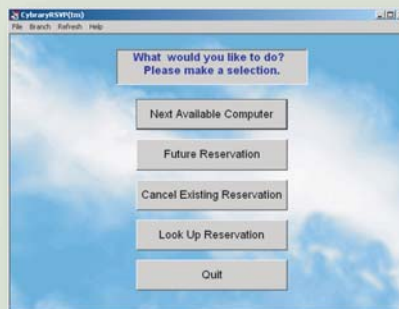


By selecting CybraryRSVP™ software, you are giving the public the opportunity to share your technology resources fairly and securely. This product is a public workstation reservation system that works in conjunction with the CybraryN™ software product. Using a kiosk machine, patrons can make a reservation for a computer in the future, or request a reservation on the next available computer. A reminder receipt can be printed when a reservation is made for your patrons. After patrons log into their reservations, they will receive all the time settings that you have set in the CybraryN™ software to ensure equal time is given to all using the computers. CybraryRSVP™ software also allows you the ability to separate your computers into groups.

Application Screenshots



CybraryRSVP™ Administration



CybraryRSVP™ Patron Kiosk

Features

- Kiosk mode allows patrons to make their own reservations.
- Print reservation reminder receipts when reservations are made.
- Provides grace time for late arrivals.
- Limit number of reservations per patron.
- Staff can monitor, add and edit reservations.
- Monitor the number of times a patron does not show up for a reservation and block them when they accumulate too many.
- Input holiday schedules and exception dates so patrons do not reserve computers on those dates.
- Ability to make reservations over the web (requires Microsoft IIS Web Server software).
- Communicate directly to your Automated Library Systems allowing real time authentication against your patron database.
- The software authenticates against most major database formats.
- The software supports all major Integrated Library System vendors.

Benefits

- Eliminates manual sign-up sheets and waiting lines.
- Can be used with the CybraryN™ software desktop or the Windows Desktop.
- Give patrons a definitive time on when a computer will be available for them.
- Provides an easy to use interface for both staff and users.
- Helps to distribute your library's computer resources equitably.

Authenticating Systems

Innovative • Dynix • SIRSI • TLC • Gaylord/Polaris • VTLS • Follett • 3M • Oracle
Sybase • MS®-SQL • Carl • DRA • Athena • Sagebrush • Galaxy

Requirements

- Windows® 98/NT/2000/XP compatible computer.