

CybraryNet™ Software

Libraries

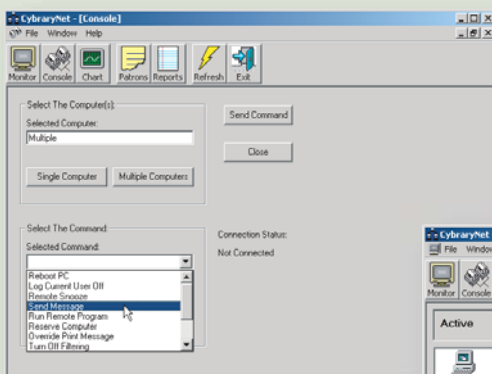
Schools

Corporations

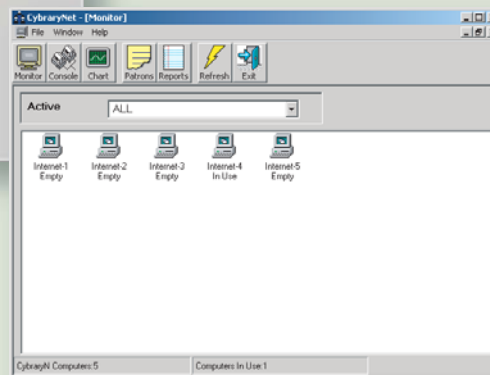


The CybraryNet™ software is designed to be a companion product to your CybraryN™ software workstations that allows you to send messages and commands remotely. This means reduced time from your staff as control can be administrated directly from their own computers. In addition to sending remote commands and messages to your CybraryN™ software workstations, the CybraryNet™ software allows you to run reports from your staff computers. The CybraryNet™ software will give your staff an easy way to see what is going on in the computer lab without having to go look at each computer. The CybraryNet™ software allows your staff more time to do what they do best, serve your patrons.

Application Screenshots



CybraryNet™ Command



CybraryNet™ Monitor

Features

- Simple browse-and-click computer interface that allows you to separate your CybraryN™ software computers into different viewing groups.
- High-speed communication protocol.
- Commands and messages can be sent to one, multiple, or all of your CybraryN™ software computers simultaneously.
- Send customizable text messages directly to library patron's computer.
- Remotely reboot and shutdown your CybraryN™ software computers.
- View charts showing how much time each patron has left in their session.
- Control a patron's session by remotely logging them off the computer or extending their session.
- Compile usage reports from your CybraryN™ software computers.
- Perform remote computer administration.

Benefits

- Help individual library patrons directly from a remote location.
- Reduces administrative time and staff involvement on library public access computers.
- Monitor any CybraryN™ software computer session remotely.
- Perform computer administrative functions on your public computers remotely from your desk.

Requirements

- Windows® 98/NT/2000/XP compatible computer.